



F1 Res 44 Horizontal Side Wall

Details below are taken from data supplied by the head manufacturer.

Up to 4.9 x 6.1 metres coverage from 1 head

Temperature Range **68°C or 79°C**

Escutcheon F2

Installation Data

Thread Size mm	K Factor	Maximum Pressure kPa	Maximum Ambient Temperature	Sprinkler Length
15mm	63	1200	38°C 66°C	62 mm

Minimum Spacing of 4.3 Metres



RRP
\$ **40.00**
Plus GST

Max Spacing	Ceiling to Deflector	LPM	Pressure kPa
3.6 x 3.6	101 - 152mm	45.4	52
4.3 x 4.3		53	71
4.9 x 4.9		60.6	92
4.9 x 5.5		68.1	116
5.5 x 5.5		72	129
4.9 x 6.1		87.1	189
3.6 x 3.6	152 - 305mm	53	71
4.3 x 4.3		60.6	92
4.9 x 4.9		64.4	104
4.9 x 5.5		75.7	143
4.9 x 6.1		87.1	189



Features

- 1 Residential
- 2 Quick Response
- 3 3mm Glass bulb
- 4 Pressure Rated 1200 kPa
- 5 Tested to 3445 kPa
- 6 Tread Size 1/2" NPT
- 7 Minimum Density of 2.03 LPM per square metre



Listings & Approval

1. Listed by Underwriters Laboratories, and certified by UL for Canada (cULus)
2. NYC MEA 258-93-E

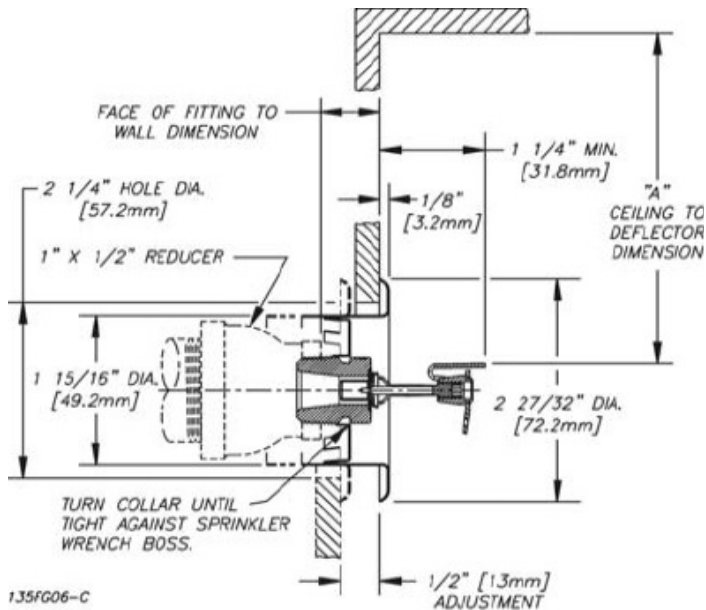
Product Description

The F1 Res Horizontal Sidewall sprinklers (Figs.1 and 2) are equally attractive when above ceiling piping cannot be used.

The 3mm glass-bulb pendent sprinklers, with a K-Factor of 63, permit the efficient use of residential water supplies for sprinkler coverage in residential fire protection design.

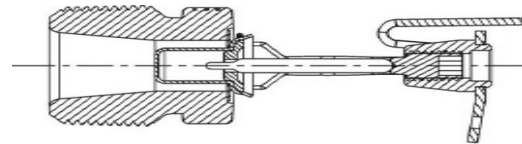
The low flow F1 Res sprinklers are specially engineered for fast thermal response to meet the sensitive fire protection application needs of the latest residential market standards (UL 1626 Standard effective 7/12/02).

Upon fire conditions, rising heat causes a sprinkler's heat-sensitive glass-bulb to shatter, releasing the waterway for water flow onto the deflector, evenly distributing the discharged water to control a fire.



F1 RES 58, 44 & 40 HSW/F2

Figure 1



1.35FG05

Figure 2

Application and Installation

Model F1 Res Sprinklers are used for Residential Fire Protection according to UL 1626 Standard*. Be sure that orifice size, temperature rating, deflector style and sprinkler type are in accordance with the latest published standards of the authority having jurisdiction.

Models F1 Res sprinklers are to be installed as shown. Model F1 and F2 Escutcheons, illustrated herewith, are the only recessed escutcheons to be used with Model F1 Res sprinklers. Use of any other recessed escutcheon will void all approvals and warranties. For installing Models F1 Res Recessed SWC sprinklers use only the Model GFR1 sprinkler wrench.

Use of wrenches other than those specified may damage these sprinklers. Install F1 Res 44 HSW with a ceiling to deflector distance of 102 - 305mm . Flow arrow on deflector must point away from near wall and "Top" marking must face ceiling.

Note: DH56 and DH56 Recessed Sprinklers have orange bulb protectors to minimize bulb damage during shipping, handling, and installation. REMOVE THIS PROTECTION AT THE TIME THE SPRINKLER SYSTEM IS PLACED IN SERVICE FOR FIRE PROTECTION.

Removal of the protectors before this time may leave the bulb vulnerable to damage. Wrenches are designed to install sprinklers when covers are in place.

REMOVE PROTECTORS BY UNDOING THE CLASP BY HAND. DO NOT USE TOOLS TO REMOVE THE PROTECTORS

Note: A leak tight 1/2" NPT (R1/2) sprinkler joint can be obtained with a torque of 8-18 ft-lbs (10.8-24.4 N-m). Do not tighten sprinklers over maximum recommended torque. It may cause leakage or impairment of the sprinklers



Fire & Safety Ltd

Saving Lives Since 1978

Model F1 Res 44 Horizontal Sidewall Sprinkler

Sprinklers shall be [cULus Listed] [New York City MEA Approved (258-93-E)] low flow residential horizontal sidewall sprinklers engineered to provide a minimum design density (See above) over the listed coverage area. Listed flows as specified by the manufacturer's technical data sheets are to be used. Residential sprinklers shall be installed in conformance with the manufacturer's installation guidelines and the applicable installation standard. Where horizontal sidewall residential sprinklers are installed under sloped ceilings having a pitch of up to [1:3] [2:3], the sprinklers shall be listed for such use. Sprinkler frame and deflector shall be of bronze frame construction having a ½" NPT thread. Water seal assembly shall consist of a Teflon-coated Belleville spring washer and top-loaded extruded cup with 3 mm glass bulb containing no plastic parts, and having a temperature rating of 68 C or 79 C. Sprinklers shall have a nominal K-factor of 63. Standard finish: Bronze Chrome-plated or White Polyester.

Residential horizontal sidewall sprinklers shall be Reliable Model F1 Res 44, SIN R3531 (Bulletin 135).

Model F1 Res 44 Recessed Horizontal Sidewall Sprinkler

Use description for the Model F1 Res 44 horizontal sidewall sprinkler with the following modifications:

Replace "horizontal sidewall sprinkler" with "recessed horizontal sprinkler." Add: Recessed escutcheon assembly shall be a steel, two-piece escutcheon with 13mm adjustment (Model F2). Standard finish shall be [brass][bright chrome] [white painted]

Residential recessed horizontal sidewall sprinklers shall be Reliable Model F1 Res 44/F2, SIN R3531 (Bulletin 135)..

Maintenance

Model F1 Res 44 Sprinklers should be inspected quarterly and the sprinkler system maintained in accordance with NFPA 25, 13, 13D and 13R. Do not clean sprinklers with soap and water, ammonia or any other cleaning fluids. Remove dust by using a soft brush or gentle vacuuming. Remove any sprinkler cover plate assembly which has been painted (other than factory applied) or damaged in any way.

A stock of spare sprinklers should be maintained to allow quick replacement of damaged or operated sprinklers.

Prior to installation, sprinklers should be maintained in the original cartons and packaging until used to minimize the potential for damage to sprinklers that would cause improper operation or non-operation.